



Premium Shade Solutions

# CANTILEVER UMBRELLA







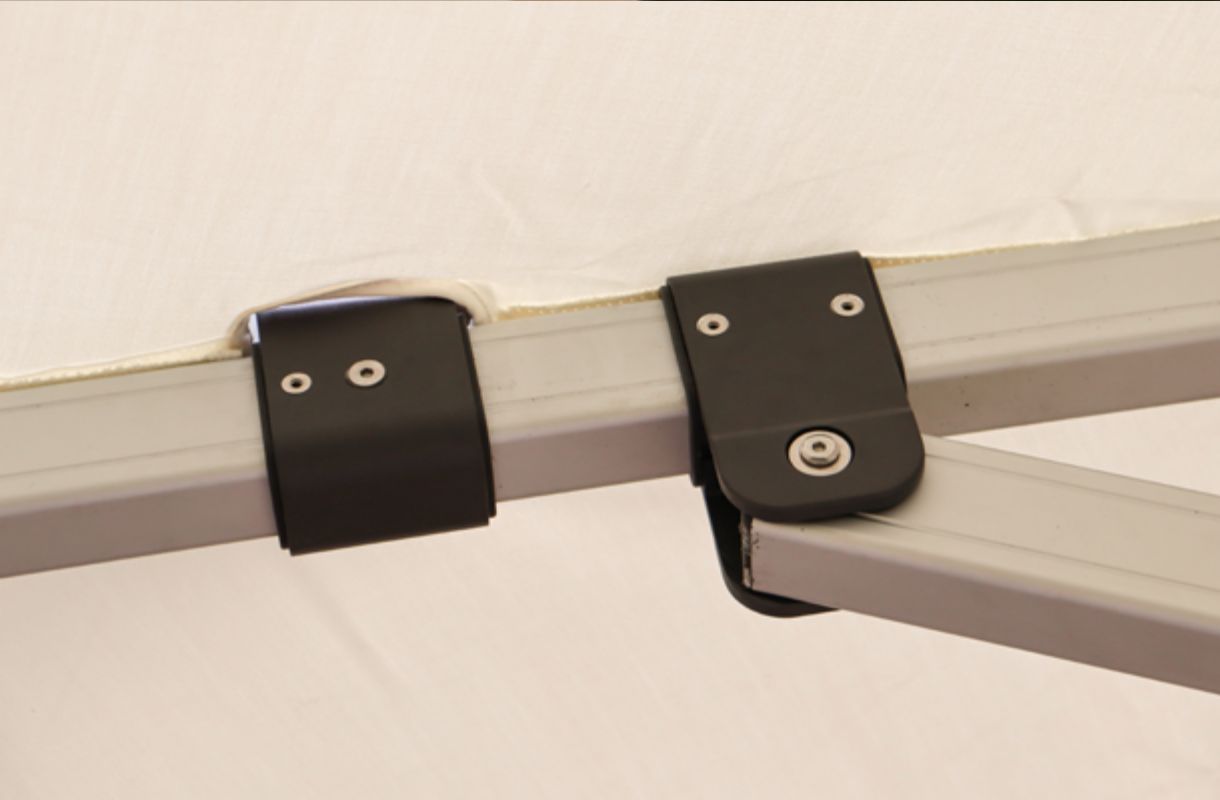
PRODUCT SHOWN

13' diameter octagonal - Cantilever Umbrella

Spanish Recasens - Yellow

Weight plate frame holds 12x marble weight plates









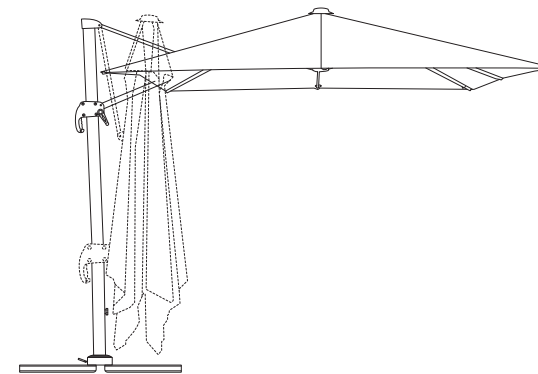
PRODUCT SHOWN  
13' x 13' square - Cantilever Umbrella  
Spanish Recasens - Macaw

## CANTILEVER UMBRELLA RANGE

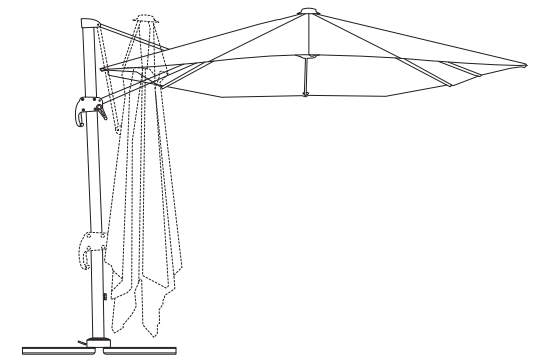
Flare Shade Cantilever Umbrellas are the perfect outdoor shade solution when you need to "move your shade." Cantilever umbrellas have a unique function that normal umbrellas lack. The cantilever umbrella is designed with a side-placed support frame which counter balances the canopy. The side mounted pole, which is fixed onto a bearing base plate, allows the canopy to swing fully through a 360 degree rotation.

The Flare Shade cantilever umbrella has been engineered for strength and long term durability.

### Premium Shade Solutions





**Square**  
11' x 11' & 13' x 13'



**Octagonal**  
13' diameter

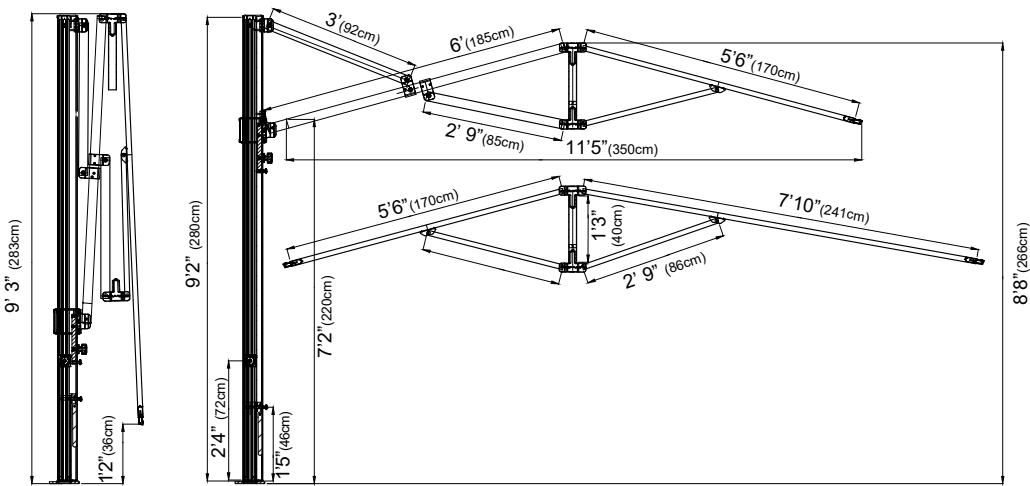
Specifications



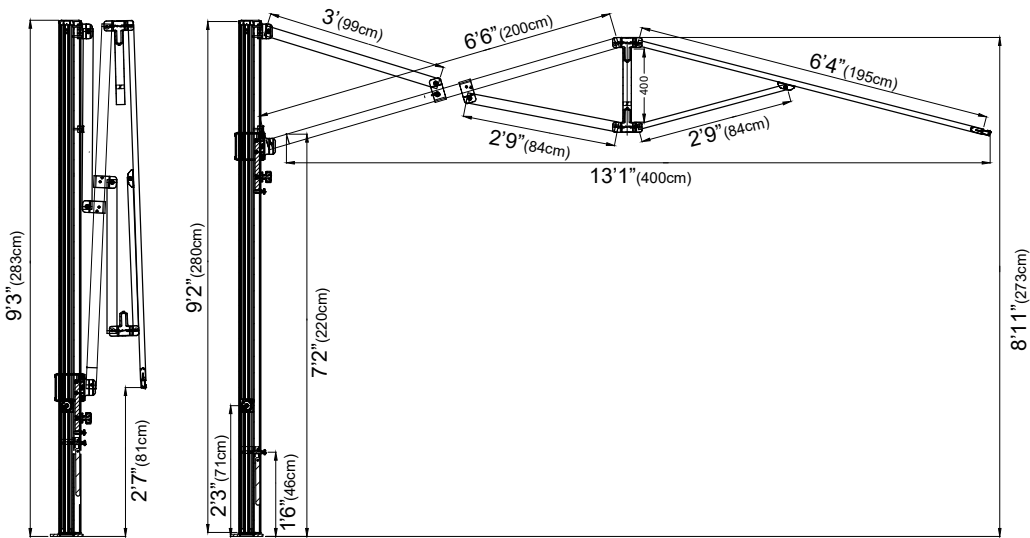
Shape			
	Square		Octagonal
Size	11' x 11'	13' x 13'	13'
Height opened/closed	9' 3" (2.83m)		
Clearance	7' (2.20m)		
Fabric Weight	8.8lbs (4kg)	11lbs (5kg)	11lbs (5kg)
Frame Weight	121.3lbs (55kg)	130lbs (59kg)	130lbs (59kg)
Ribs	0.8" x 1" (2 x 3cm)		
Main Pole	3" x 5" (8.5 x 12cm)		
Support Bar	2" x 1" (5.5 x 3.5cm)		
Framework	Aluminium 1/8" thick		
Rotation	360°		
Fabric	Flare Shade Acrylic		
Printing	Full Color Digital Printing		
Engineer Certificate	Yes		
Transport Box	10" x 22" x 9' 8"		
Manufacturer's Warranty	Frame 1 year* Flare Shade Acrylic 5 Years Fade Resistant Printed Fabric: 2 Years		

Technical Information

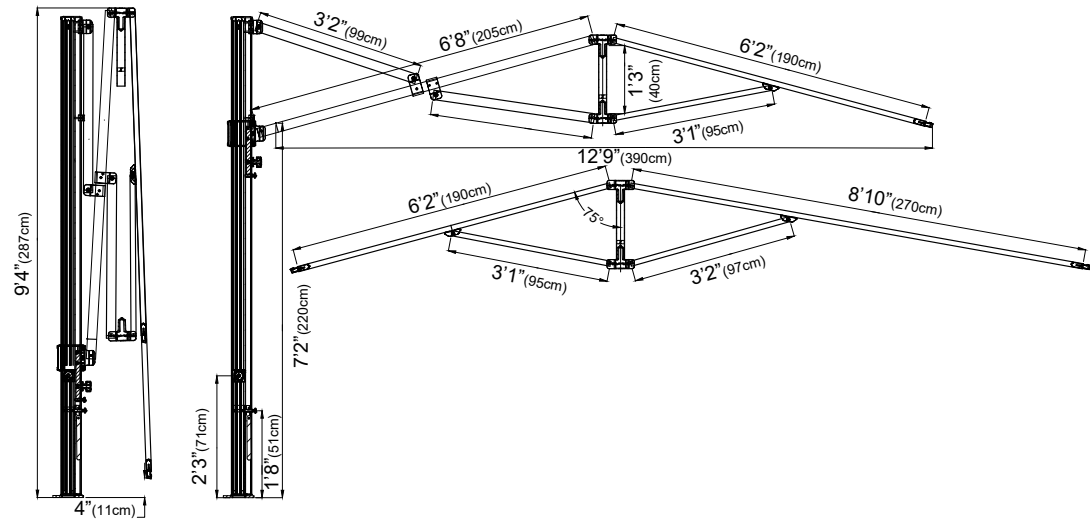
Square  
11' x 11'



Square  
13' x 13'



Octagonal  
13' diameter

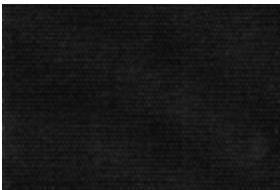




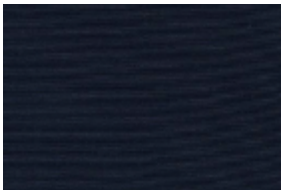
# Fabric Colors

## Flare Shade Acrylic

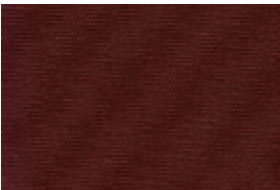
The Flare Shade Acrylic is specifically imported for the Cantilever range of umbrellas. This acrylic fabric is 260GSM and is available in 17 colors.



**Black** YZA02-01  
Pantone Black



**Navy** YZA04-01  
Pantone 2767C



**Burgundy** YZA03-03  
Pantone 1817C



**White** YZA01-01  
Pantone White



**Charcoal Gray** YZA05-01  
Pantone 446C



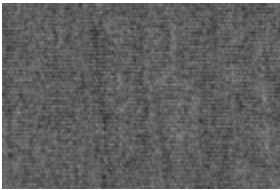
**Blue** YZA04-02  
Pantone 2186C



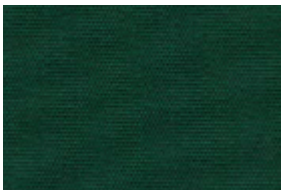
**Red** YZA03-01  
Pantone 7622C



**Khaki** YZA07-01  
Pantone 2324C



**Deep Gray** YZA05-02  
Pantone n/a



**Green** YZA08-01  
Pantone 3302C



**Rust** YZA03-02  
Pantone n/a



**Beige** YZA07-02  
Pantone n/a



**Smoky** YZA05-03  
Pantone n/a



**Teal** YZA08-02  
Pantone 328C



**Yellow** YZA06-01  
Pantone 1235C



**Light Gray** YZA05-04  
Pantone n/a



**Macaw** YZA08-03  
Pantone 7495C

## Frame Color



# Printing

## UV Printing

Ultra Violet printers offer cutting edge technology and are perfect for full color digital photographic images, logos or company branding. The Ultraviolet printing process is superior to standard inkjet printers as a UV light follows the printing head and cures the ink. This results in a far more robust substrate and offers long term fade resistance.

## Screen Printing

Screen printing process is perfect for simple logos, cafe names or other branding. This process uses a series of screens that apply the ink directly onto the fabric. Each color requires an additional screen to be made. Although screen printing is more suitable for large volume production, it is also ideal for multiple units. The Extreme Canopy graphics team can recommend which process best meets your requirements.





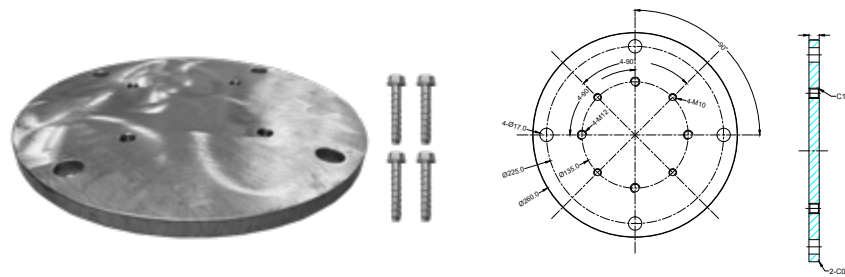
## Ground Fixings

### Ground Mount Plate

Steel Plate: 10" x 10" x 1/2"

4x Dynabolts

*Available for all sizes*

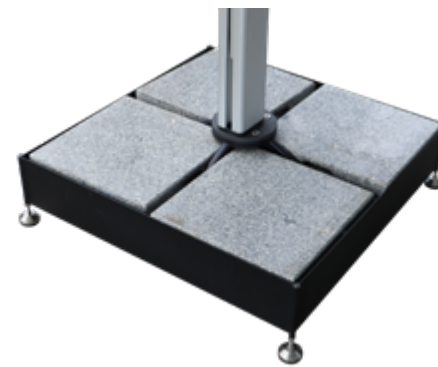


### Cantilever Weight Base

Dimensions: 36" x 36" x 8"

Steel Square Frame Holds 12 x Marble Weight Plates (35lbs ea) Total weight 485lbs

*Available for all sizes*



## Protective Cover

### Details

Covers over pole & umbrella fabric

White Polyester Fabric

Zip to close

*Included with purchase*



## Engineer Certification

### Octagonal

13' diameter



<https://www.extremecanopy.com/pdf/Umbrellas/Certificates/Cantilever-13ft-diameter-Certificate.pdf>

### Square

11' x 11'



<https://www.extremecanopy.com/pdf/Umbrellas/Certificates/Cantilever-11ftx11ft-Certificate.pdf>

### Square

13' x 13'



<https://www.extremecanopy.com/pdf/Umbrellas/Certificates/Cantilever-13ftx13ft-Certificate.pdf>

## Product Features



### Canopy tilt

The canopy can also be tilted at a range of angles.



### Rotation 360°

The side mounted pole, which is fixed onto a bearing base plate, allows the canopy to swing fully through a 360 degree rotation.



**P** (888) 480 0280

admin@flare-shade.com

17852 Gothard St, Huntington Beach, CA 92647

**SHOP ONLINE** [www.flare-shade.com](http://www.flare-shade.com)



**P** (888) 201 1968

admin@extremecanopy.com

17852 Gothard St, Huntington Beach, CA 92647

**SHOP ONLINE** [www.extremecanopy.com](http://www.extremecanopy.com)