

SET-UP INSTRUCTIONS

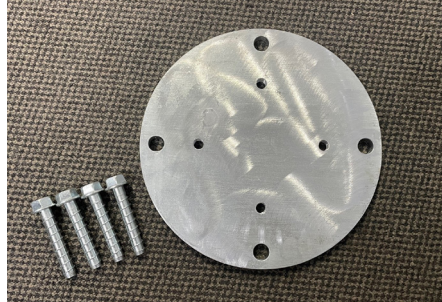
Please read instructions completely before setting up your umbrella. Make sure you have all the components identified on the parts list. Recommended procedure below. For safety reasons it is recommended that 2 people set-up / pack down any umbrella.

OPTIONAL WEIGHT PLATE



1. Add the 16 marble weight plates to the steel Cantilever base before setting up Cantilever Umbrella.

OPTIONAL STEEL BASE PLATE



OR Secure steel base plate to concrete slab using dyno bolts.
Ensure concrete slab or timber deck meets requirements and surface is safe to mount to.

CANTILEVER INSTRUCTIONS

11' x 11' | 13' x 13' | 13' dia.



2. Secure the frame to cantilever base with bolts and Allen key.



3. Using a step ladder place roof fabric over the Cantilever frame.



4. Ensure the center of the fabric is aligned with the center of the frame.



5. Secure Velcro around the frame awning pole.



6. Attach canopy to main frame with qty **1** bolt & washer. Attach the fabric to the ribs with qty **7** screws & washers.



7. Unfasten the screw until loose.



8. Slide the main connector up the frame until pin locks into place.



9. Fasten screw until tight.



7. Using the crank wind the umbrella open.



8. When crank becomes tight stop.



CANTILEVER RANGE UMBRELLA

PACK DOWN INSTRUCTIONS

Please read instructions completely before setting up your umbrella. Make sure you have all the components identified on the parts list. Recommended procedure below. For safety reasons it is recommended that 2 people set-up / pack down any umbrella.



1. Release the pull pin at the top of the center pole. This will allow the awning to slide down the pole.



2. Turn the crank counter clockwise to close the umbrella. Secure with strap around the main pole.



3. Once fully closed secure the canopy with the fabric strap. Fit protective cover.

ROTATE INSTRUCTIONS



1. Pull the pin, open the rotation bar. Rotate canopy to desired location.



WHAT YOU'LL NEED LIST

Stanley knife
Step Ladder
Phillips head screw driver

PARTS LIST



QTY 1
Allen Key



QTY 4
Frame bolts



QTY 7
Canopy to rib screw
and washer



QTY 1
Canopy to main frame
bolt and washer