



EXTREME CANOPY
EVENT CREST PRICE & SIZE GUIDE

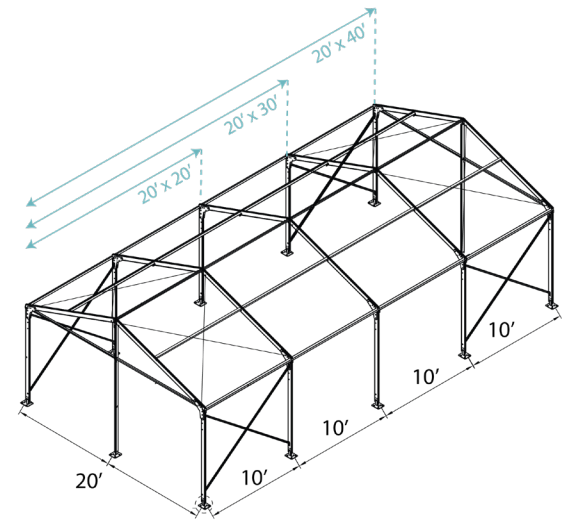


EVENT CREST

America's Premium Event Tent Range

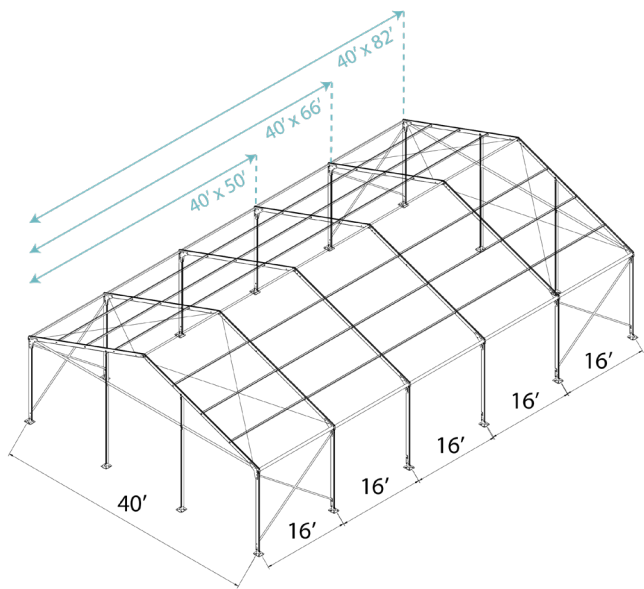
OUR CRESTS
If you are looking to buy a large canopy, event tent or temporary shade solution for outdoor events or wedding parties, our Crest tent range will perfectly suit your need. These large-size event tents are customizable to virtually any length or width. By adding modular bays, the tents can be expanded as required. At Extreme Canopy, we are a team of highly experienced marquee manufacturers who can create tents of any size that suits your requirement. We manufacture event and wedding tents for sale that offer exceptional strength, durability, and coverage that is unmatched by any other style of tent on the market.

ANY EVENT
If you have an event that needs a large-scale event tent like outdoor wedding tents, our engineers can manufacture a canopy at a size that will suit you. Our large event tents offer strength, durability and coverage that cannot be matched by any other style of tent. Ideal for outdoor weddings, walkways, promotional events and large scale storage sheds, event tents in our Crest Range are big on size and even bigger on quality. If you want one custom-built for your needs.



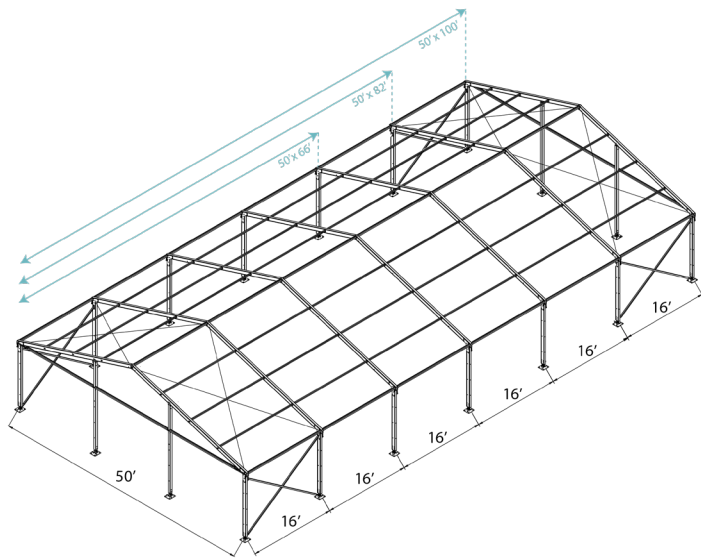
Dimensions		Frame Specifications	
Span Width: 20'		Clearance: 8.5'	
Bay Distance: 10'		Main Profile: 84 x 48 x 3mm	
Minimum Tent Length: 10'		Roof Fixing: Bar Tensioning	
Maximum Tent Length: No Limit		Max Windspeed: 50mph (80km/hr)	
Roof Pitch: 20°			
Size	Price	Price includes white PVC roof and frame. Walls and accessories sold separately.	
20' x 20'	\$11,683		
20' x 30'	\$13,489		
20' x 40'	\$14,902		

Price includes white PVC roof and frame. Walls and accessories sold separately.



Dimensions		Frame Specifications	
Span Width: 40'		Clearance: 10'	
Bay Distance: 16'		Main Profile: 122x 68x 3mm	
Minimum Tent Length: 16'		Roof Fixing: Bar Tensioning	
Maximum Tent Length: No Limit		Max Windspeed: 50mph (80km/hr)	
Roof Pitch: 20°			
Size	Price	Price includes white PVC roof and frame. Walls and accessories sold separately.	
40' x 50'	\$33,594		
40' x 66'	\$38,957		
40' x 82'	\$44,327		

Price includes white PVC roof and frame. Walls and accessories sold separately.



Dimensions		Frame Specifications	
Span Width: 50'		Clearance: 10'	
Bay Distance: 16'		Main Profile: 166x 88x 3mm	
Minimum Tent Length: 16'		Roof Fixing: Bar Tensioning	
Maximum Tent Length: No Limit		Max Windspeed: 50mph (80km/hr)	
Roof Pitch: 18°			
Size	Price	Price includes white PVC roof and frame. Walls and accessories sold separately.	
50' x 66'	\$51,150		
50' x 82'	\$58,630		
50' x 100'	\$60,455		

Price includes white PVC roof and frame. Walls and accessories sold separately.

FS84

FUNCTION STANDARD 84 SERIES

Main Profile 84 x 48 x 3mm

ES122

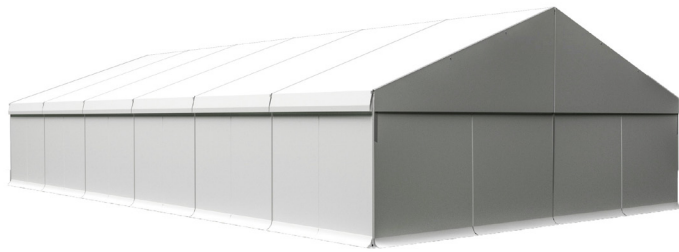
EVENT STANDARD 122 SERIES

Main Profile 122 x 68 x 3mm

ED166

EVENT DELUX 166 SERIES

Main Profile 166 x 88 x 3mm



FD 100

FUNCTION DELUX 100 SERIES

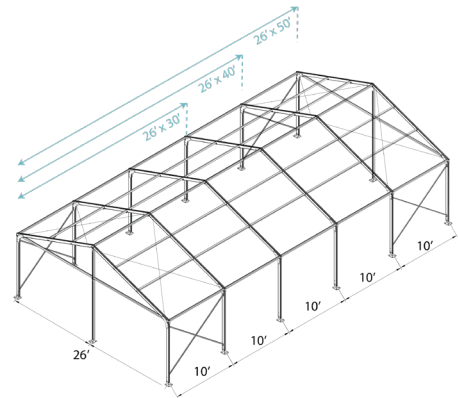
Main Profile 100 x 48 x 3mm

Dimensions

Span Width: 26' / 30' / 33'
Bay Distance: 10'
Minimum Tent Length: 10'
Maximum Tent Length: No Limit
Roof Pitch: 20°

Frame Specifications

Clearance: 8.5'
Main Profile: 100 x 48 x 3mm
Roof Fixing: Bar Tensioning
Max Windspeed: 50mph (80km/hr)



FD 100 SERIES 26' SPAN 10' BAYS

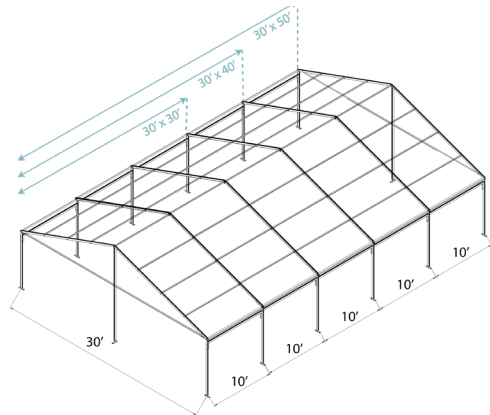
Price includes white PVC roof and frame. Walls and accessories sold separately.

Size

26' x 30'
26' x 40'
26' x 50'

Price

\$17,461
\$19,667
\$21,870



FD 100 SERIES 30' SPAN 10' BAYS

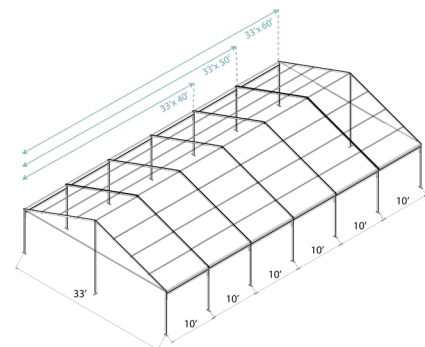
Price includes white PVC roof and frame. Walls and accessories sold separately.

Size

30' x 30'
30' x 40'
30' x 50'

Price

\$18,359
\$20,659
\$22,952



FD 100 SERIES 33' SPAN 10' BAYS

Price includes white PVC roof and frame. Walls and accessories sold separately.

Size

33' x 40'
33' x 50'
33' x 60'

Price

\$21,096
\$23,470
\$26,307



EC 203

EXTREME CREST 203 SERIES

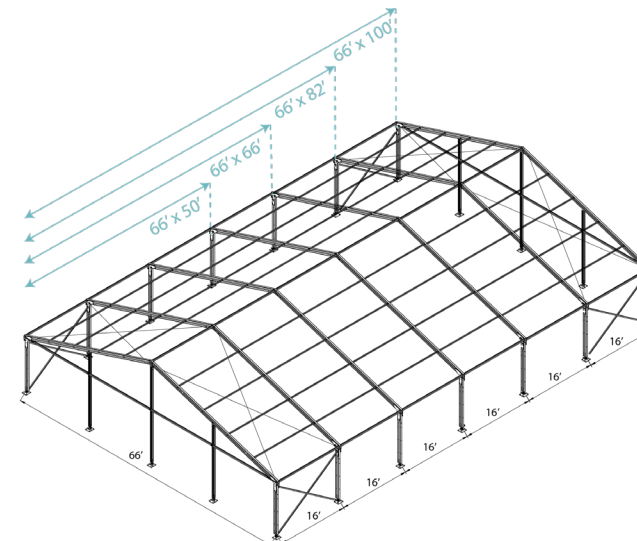
Main Profile 203 x 122 x 3mm

Dimensions

Span Width: 66' / 82'
Bay Distance: 16'
Minimum Tent Length: 50'
Maximum Tent Length: No Limit
Roof Pitch: 18°

Frame Specifications

Clearance: 12.5'
Main Profile: 203x 112x 3mm
Roof Fixing: Bar Tensioning
Max Windspeed: 50mph (80km/hr)



EC 203 SERIES 66' SPAN 16' BAYS

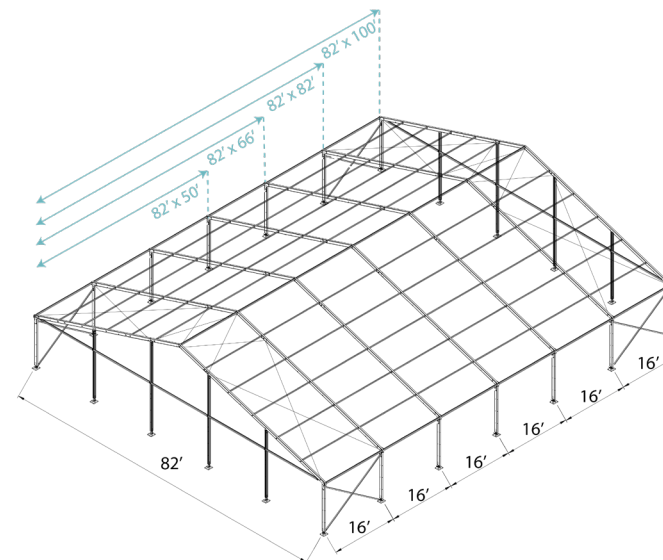
Price includes white PVC roof and frame. Walls and accessories sold separately.

Size

66' x 50'
66' x 66'
66' x 82'
66' x 100'

Price

\$65,669
\$76,510
\$78,103
\$82,577



EC 203 SERIES 82' SPAN 16' BAYS

Price includes white PVC roof and frame. Walls and accessories sold separately.

Size

82' x 50'
82' x 66'
82' x 82'
82' x 100'

Price

\$77,639
\$90,482
\$124,869
\$142,478

**Crest Tents are designed to metric measurements. All imperial dimensions are rounded. Crest Tents are designed as semi-permanent structures. Building code & regulation is site specific and as such checking compliance is the responsibility of the customer. If assistance is required Extreme Canopy can engage an engineer on request. A forklift may be required for delivery and set-up. Production & delivery time frames are approximations.*

Customer Gallery



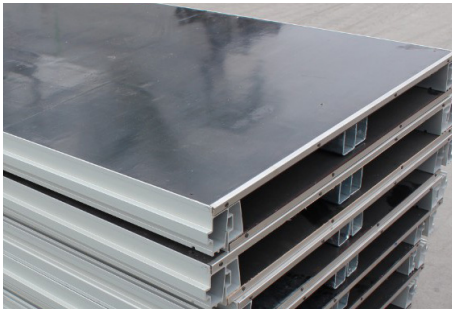
Optional Accessories Pricing

Cassette Flooring | Glass Doors

Cassette Floor System

These flooring systems are solid, water-proof & incorporate anti-slip technology making them ideal for most events.

Size	Price
1sqft.	\$25



Glass Doors

The aluminium frame glass door system is available in both single and double-winged configurations.

Size	Price
10ft Door	\$4,995
13ft Door	\$5,595
16ft Door	\$5,995

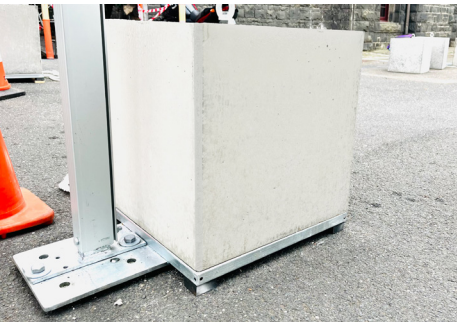
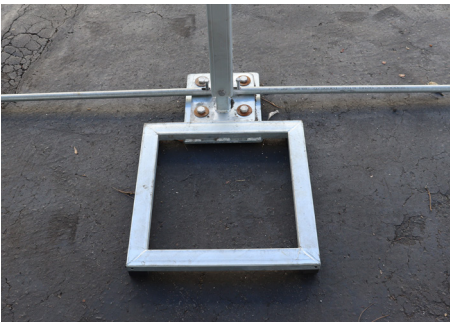


Optional Accessories

Weight Plate | Window Walls | Solid Walls | Transport Box | Steel Pins

Weight Plate

Secure your crest on hard surfaces with the steel weight plate frame. Weights not included.



Window Walls

Sidewalls are available with PVC clear windows in church, square, mesh and plain window varieties.



Solid Walls

This lightweight, integrated system shares the same structure as the glass panels & door units allowing these items to be easily interchanged.



Transport Box

Event Crests are transported in a custom made steel frame container enclosed by a sturdy PVC cover.



Steel Pins

Steel pins are used to help secuse the crest foot plates into grass or dirt flooring.





P 888 201 1968 **E** admin@extremecanopy.com

A 17852 Gothard St, Huntington Beach, CA 92647

STORE www.extremecanopy.com

