

# CREST RANGE

# ES<sup>SERIES</sup>122

## EVENT STANDARD SERIES

Main Profile 122 x 68 x 3mm, 4-channel



EXTREME CANOPY

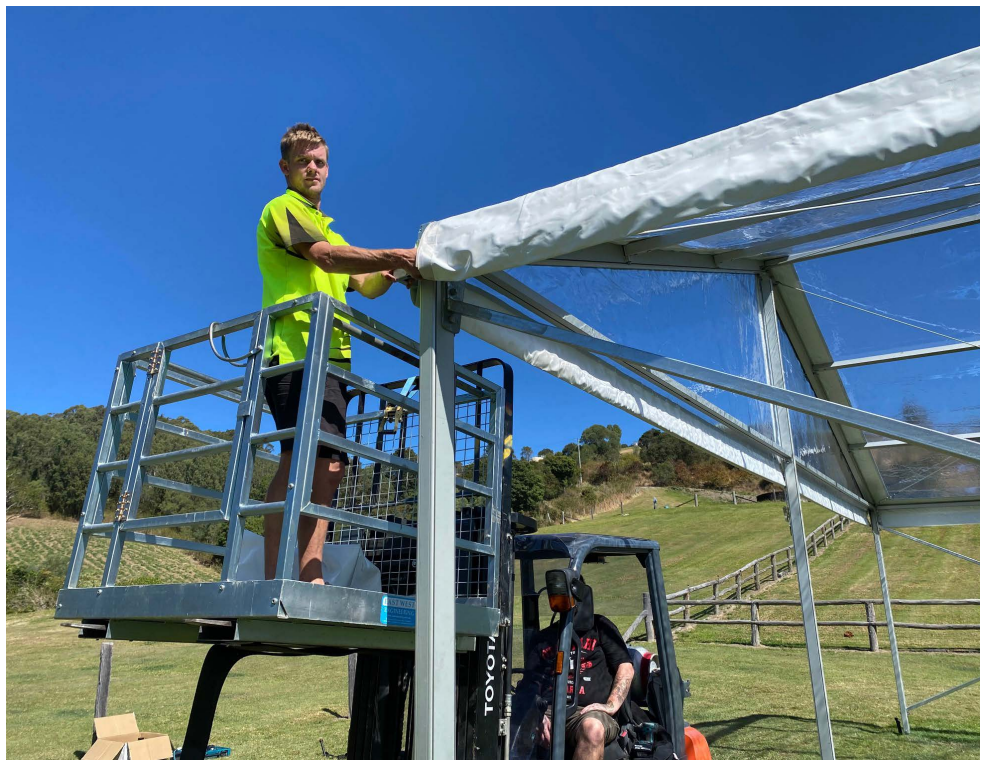




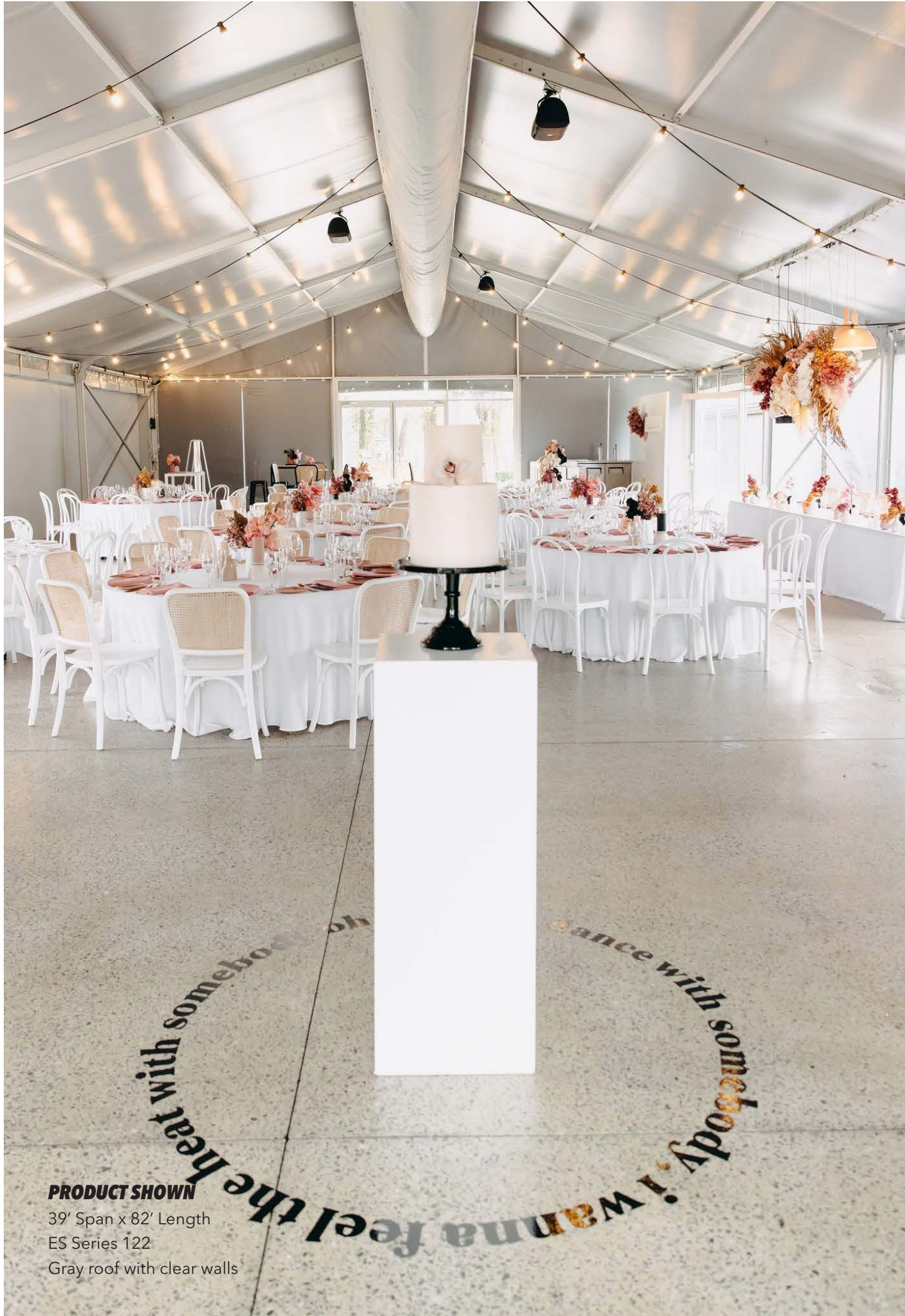
**PRODUCT SHOWN**

33' Span x 82' Length  
ES Series 122  
Clear Roof & Clear Walls









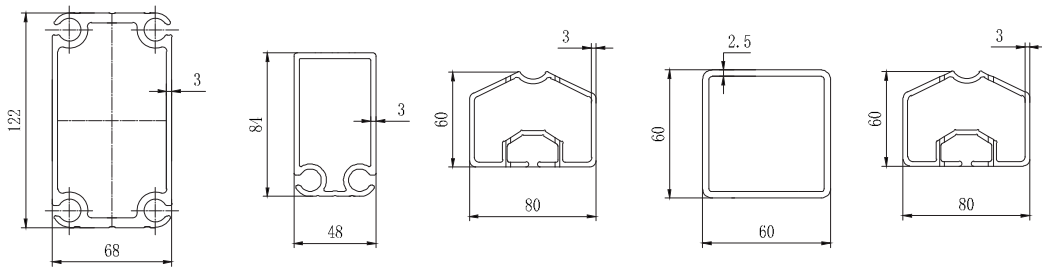
**PRODUCT SHOWN**  
39' Span x 82' Length  
ES Series 122  
Gray roof with clear walls

# ES<sup>SERIES</sup>122

## EVENT STANDARD 122 SERIES

The Event Standard (ES) Series features our professional 16' bay event canopies, available in 40' span.

Measurements below are in mm.



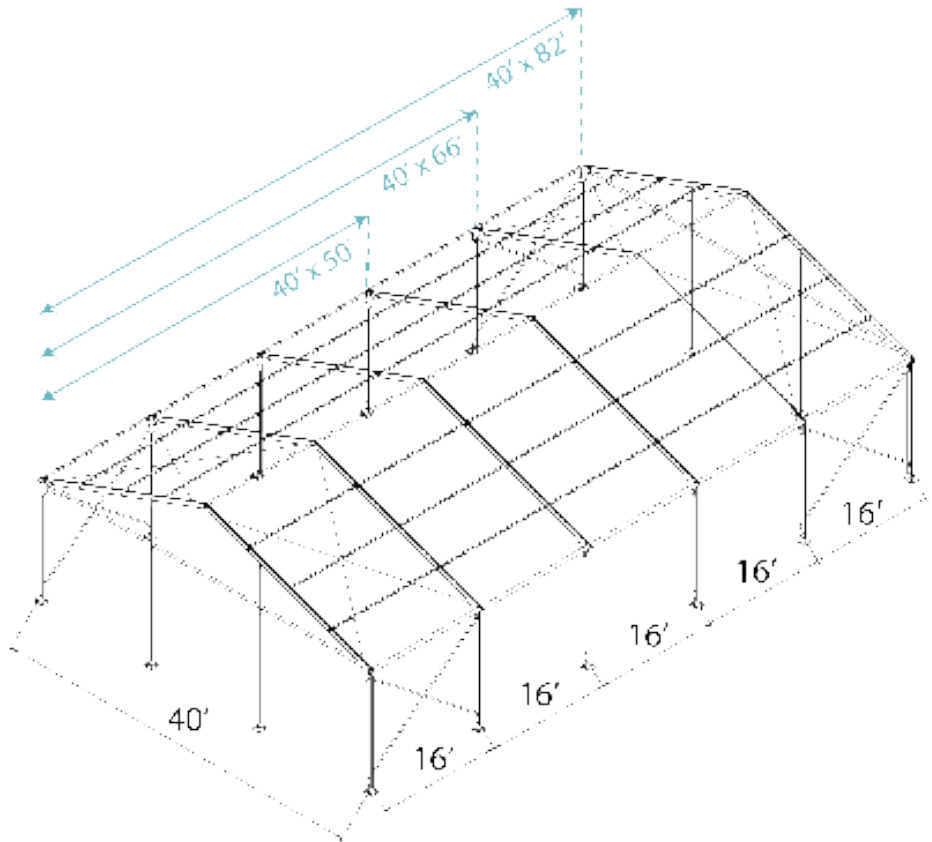
### Overview

#### Dimensions

Span Width: 40'  
Bay Distance: 16'  
Minimum Tent Length: 16'  
Maximum Tent Length: No Limit  
Roof Pitch: 20°

#### Frame Specifications

Eave Height: 10'  
Main Profile: 122 x 68 x 3mm  
Roof Fixing: Bar Tensioning  
Max Windspeed: 50mph (80km/hr)





Specifications

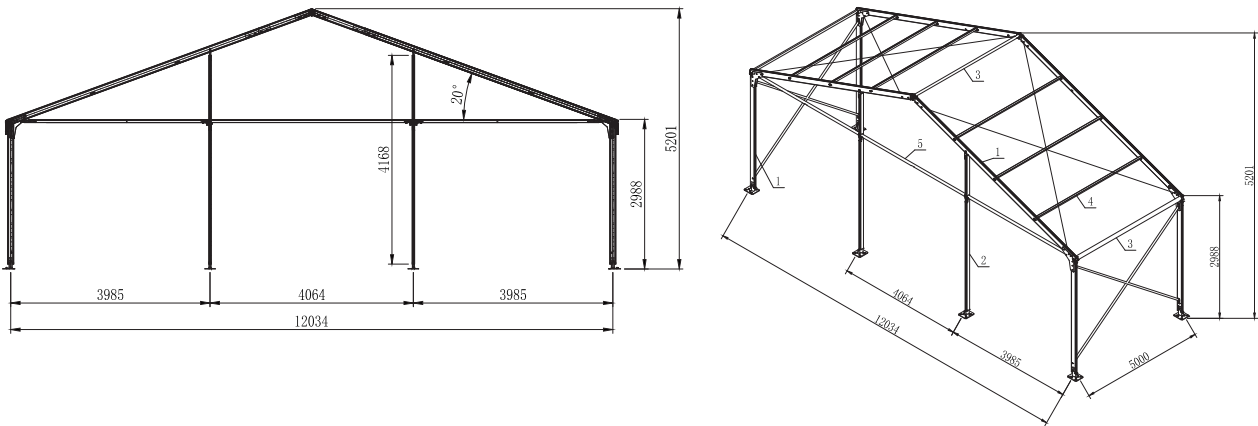


Clear-Span Width	40' (12m)
Eave Height	10' (3m)
Ridge Height	17' (5.20m)
Roof Pitch	20°
Bay Distance	16' (5m)
Longest Component	17' 7" (5.4m)
Minimum Tent Length	16' (5m)
Maximum Tent Length	No Limit
Roof Fixing	Bar Tensioning
Main Profile	122 x 68 x 3mm (4-channel)
Max Allowed Windspeed	50mph (80km/h)
Eave Connection	Hot-dip galvanized steel insert
Framework Material	Hard pressed extruded aluminum 6061/T6 (13HW)
Fabrics	850gsm PVC   950gsm clear PVC   650gsm White PVC
Printing	Full Roof Digital Printing
Certification	<a href="#">Fire Reterdant PVC</a>
Manufacturer's Warranty	10 Year Frame   5 Year White/Colored PVC   2 Year Printed PVC/Clear PVC

Technical Information

Measurements below are in mm.

40' Span (16' Bay)



Roof Line Styles



A Frame

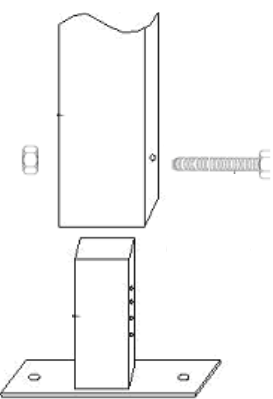


Acrum

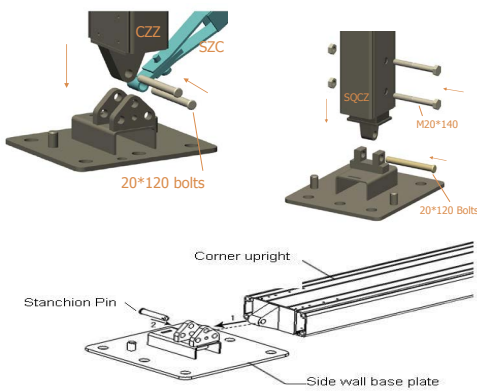
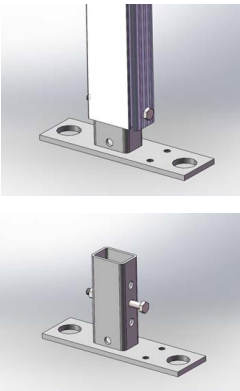


TFS

Frame Foot Plate Style



Standard Foot Plate

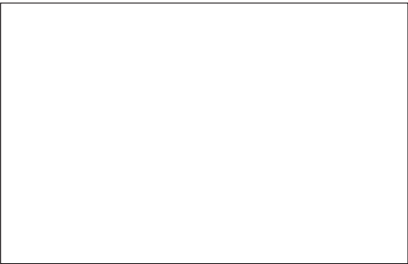


Hinge Foot Plate



# Fabric Colors

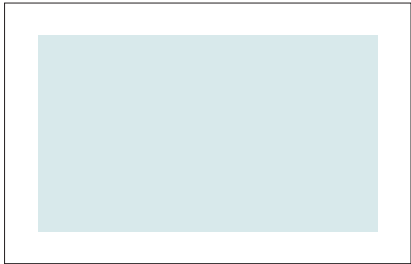
**Cover Material** 850gsm White or Colored PVC | 950GSM Clear PVC  
**Wall Fabrics** 650gsm White PVC | 850gsm Colored PVC | 950gsm Clear PVC



White



Gray



Clear



**Premium Colors** Completed projects using premium colors



Blue



Blue / clear



Black

# Printing

Large format digital printing refers to method of printing from a digital based image directly to the PVC canopy material. Once the print has dried a hot lacquer is applied to the print surface to seal the print to avoid scratches.



# Accessories

## Transportation Box

Transport boxes are custom to each order and are important to ensure the safety and protection of the Event Crest during transit and while in storage.



## Flooring

The flooring systems are solid, waterproof & incorporate anti-slip technology making them ideal for most events.  
**Colors:**  
Black and selection of woodgrain colors.



## PVC Windows

Sidewalls are available with PVC clear windows in church, square, mesh and plain window varieties.



## Solid Walls

Lightweight, integrated system shares the same structure as the glass panels & door units allowing these items to be easily interchanged.





### Glass Doors and Walls

The aluminum frame glass door system is available in both single and double-winged configurations.



### Ceiling Interiors

Add internal drapes to your event tent for a touch of elegance.



### Awnings

These visually striking structural additions provide extra protection from the elements.



### Portable Conditioning

The air conditioning compressor and fan unit have been built onto a steel frame that can be easily moved into position on a trolley.



## Ground Fixings

The frame must be fixed and secure prior to installing the roof and wall fabric.

Ensure you have the correct ground fixings for your application.

#### Grass: Steel Stakes

Fix each Base Plate with Steel Stakes. Ensure stakes are appropriately secured into the soft surface (Grass/Dirt).

#### Concrete: Dynabolt

Fix each Base Plate with Dynabolts.

**Weight Plate: Ground Mounting** (suitable for any surface)  
Each Base Plate will need to have at least 440 pounds (200kg).  
Refer to engineer certificate for more information.  
Concrete block not supplied by Extreme Canopy.



## What you will need for installation

All crest from the Extreme Canopy range are temporary structures, refer to engineer certification for more information about this product.

Drill / Impact Driver x2, Socket Set & Shifter, Ladder x2, Mallet, Tape Measure, Stringline, Level, Marking Pencil, Box Cutter & Forklift / Crane / Scissor Lift \*

The use of Scissor Lifts for Crest tent construction may vary depending on size.

## Completed Projects

*Videos available on Extreme Canopy Vimeo channel*





**P** 888- 201-1968    **E** [admin@extremecanopy.com](mailto:admin@extremecanopy.com)

17852 Gothard Street, Huntington Beach,  
California 92647, United States America

**SHOP ONLINE** [www.extremecanopy.com](http://www.extremecanopy.com)

