

CREST RANGE

EC^{SERIES}203

EXTREME CREST SERIES

Main Profile 203 x 122 x 4mm, 4-channel



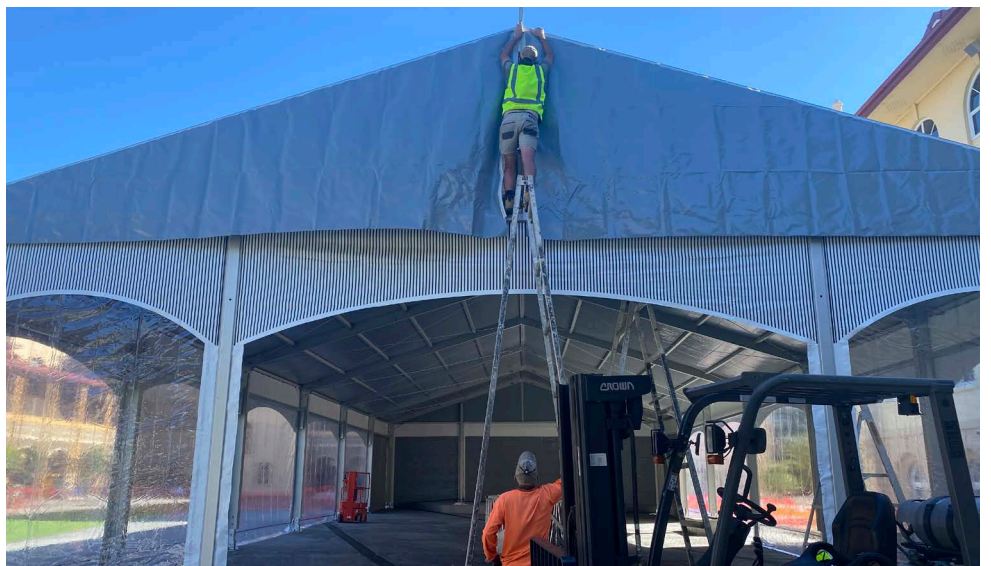
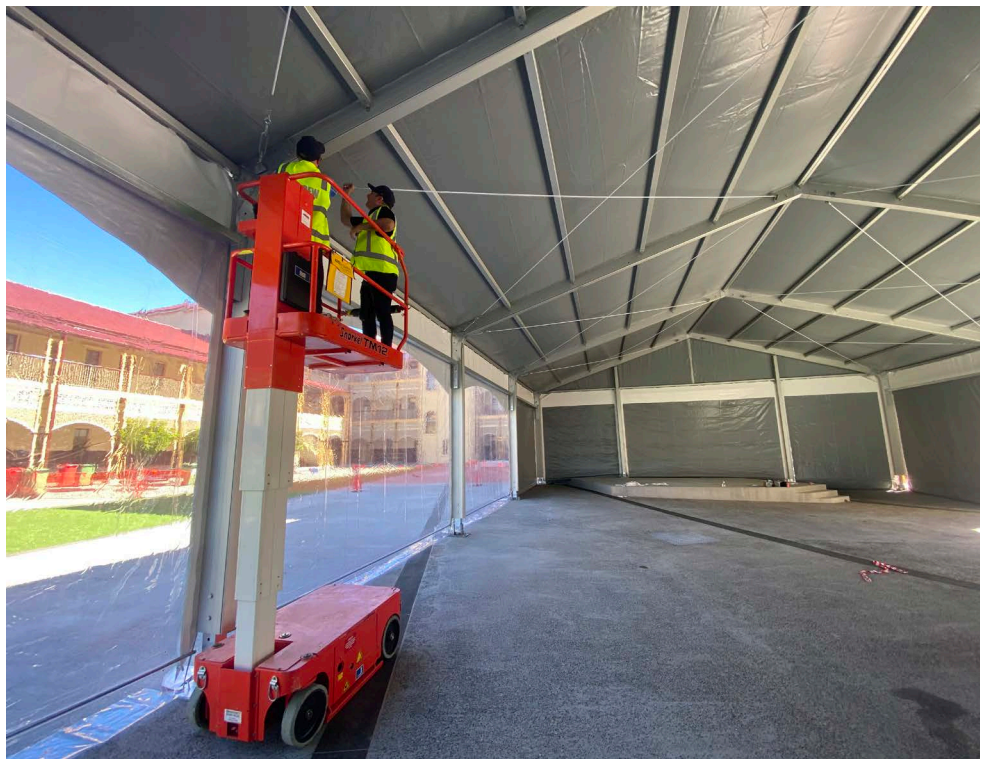


PRODUCT SHOWN

49' Span x 98' Length

EC Series 203

White Roof & White Church Style Walls





PRODUCT SHOWN

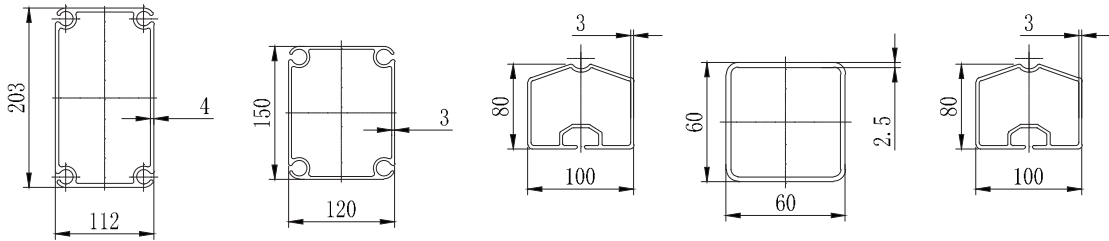
49' Span x 98' Length
EC Series 203
White roof with silk lining

EC203

EXTREME CREST 203 SERIES

The Extreme Crest (EC) is the biggest canopy structure in our range. The canopies are built to create clear spans for the largest commercial purposes. Available in spans of 66' and 82'.

Measurements below are in mm.



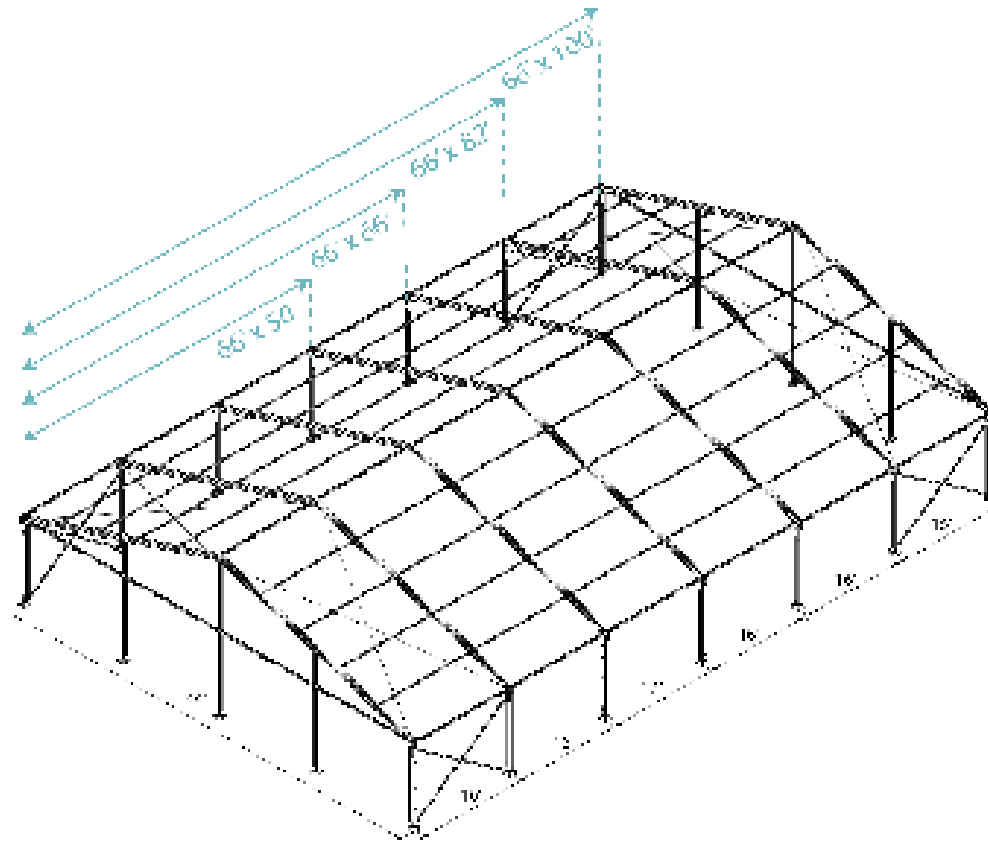
Overview

Dimensions

Span Width: 66' / 82'
Bay Distance: 16'
Minimum Tent Length: 50'
Maximum Tent Length: No Limit
Roof Pitch: 18°

Frame Specifications

Eave Height: 13'
Main Profile: 203 x 112 x 3mm
Roof Fixing: Bar Tensioning
Max Windspeed: 50mph (80km/hr)



Specifications

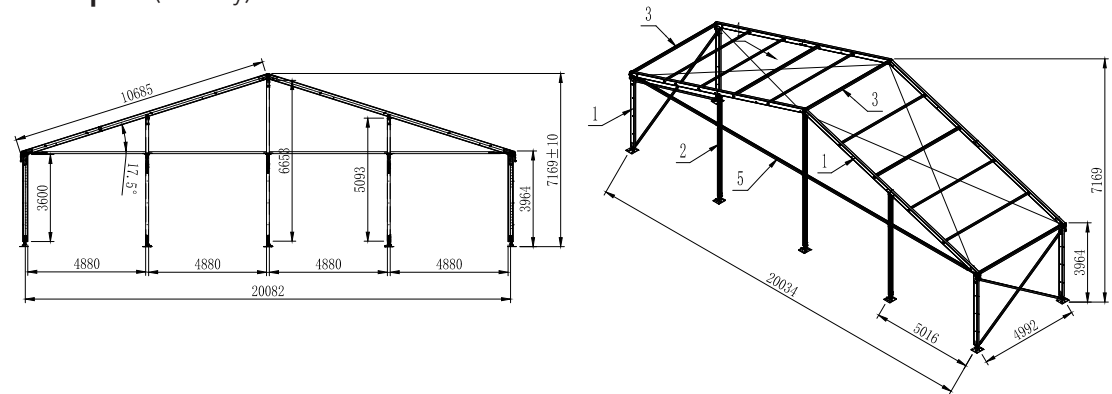


Clear-Span Width	66' (20m)	82' (25m)
Eave Height	13' (4m)	
Ridge Height	23' 4" (7.16m)	26' (7.95m)
Roof Pitch	18°	
Bay Distance	16' (5m)	
Longest Component	35' 1" (10.7m)	35' 1" (10.7m)
Minimum Tent Length	32' (10m)	
Maximum Tent Length	No Limit	
Roof Fixing	Bar Tensioning	
Main Profile	203 x 112 x 4mm (4-channel)	
Max Allowed Windspeed	62mph (100km/hr)	
Eave Connection	Hot-dip galvanized steel insert	
Framework Material	Hard pressed extruded aluminum 6061/T6 (13HW)	
Fabrics	850gsm PVC 950gsm clear PVC 650gsm White PVC	
Printing	Full Roof Digital Printing	
Engineer Certification	Fire Reterdant PVC	
Manufacturer's Warranty	10 Year Frame 5 Year White/Colored PVC 2 Year Printed PVC/Clear PVC	

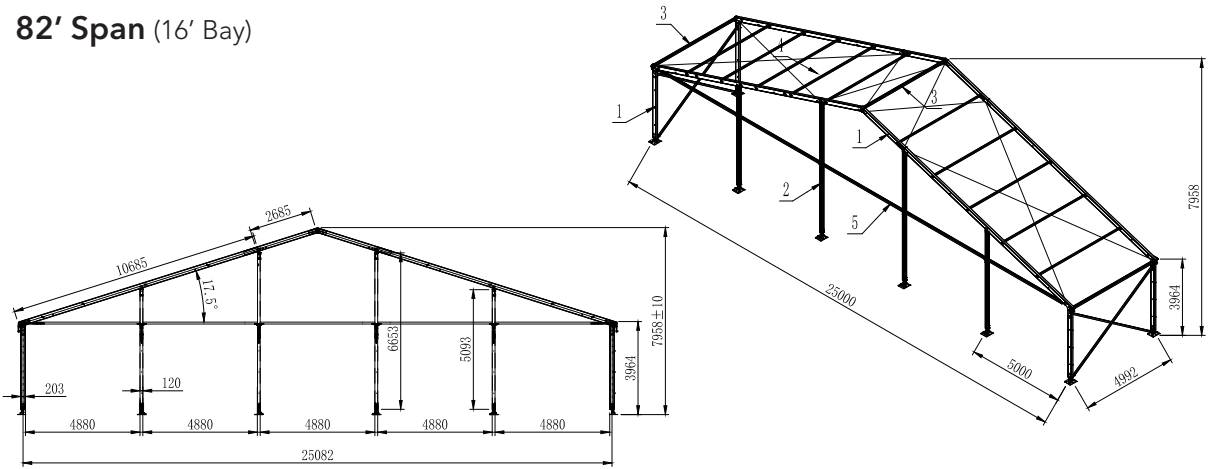
Technical Information

Measurements below are in mm.

66' Span (16' Bay)



82' Span (16' Bay)



Roof Line Styles



A Frame

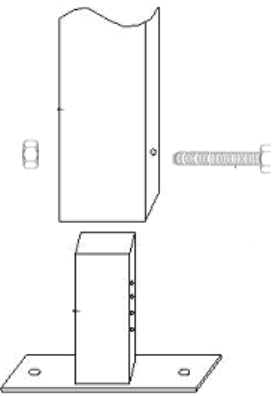


Acum

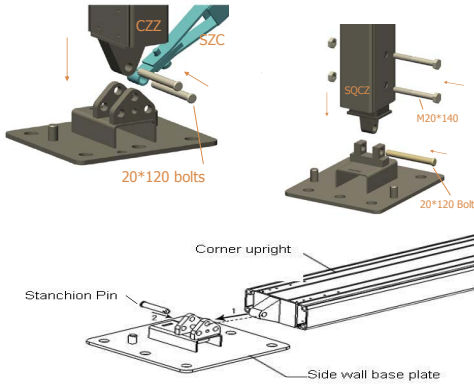
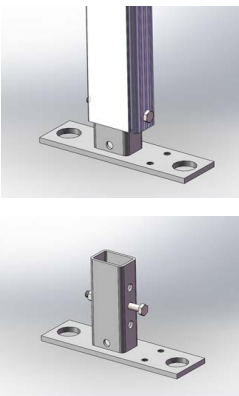


TFS

Frame Foot Plate Style



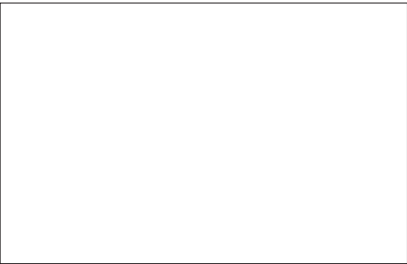
Standard Foot Plate



Hinge Foot Plate

Fabric Colors

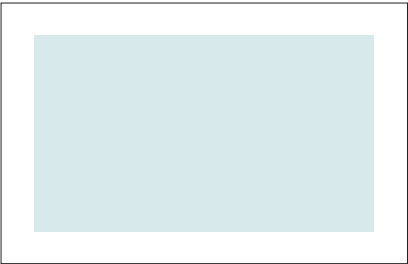
Cover Material 850gsm White or Colored PVC | 950GSM Clear PVC
Wall Fabrics 650gsm White PVC | 850gsm Colored PVC | 950gsm Clear PVC



White



Gray



Clear



Premium Colors Completed projects using premium colors



Blue / clear



Black



Blue

Printing

Large format digital printing refers to method of printing from a digital based image directly to the PVC canopy material. Once the print has dried a hot lacquer is applied to the print surface to seal the print to avoid scratches.



Accessories

Transportation Box

Transport boxes are custom to each order and are important to ensure the safety and protection of the Event Crest during transit and while in storage.



Flooring

The flooring systems are solid, waterproof & incorporate anti-slip technology making them ideal for most events.

Colors:
Black and selection of woodgrain colors.



PVC Windows

Sidewalls are available with PVC clear windows in church, square, mesh and plain window varieties.



Solid Walls

Lightweight, integrated system shares the same structure as the glass panels & door units allowing these items to be easily interchanged.



Glass Doors and Walls

The aluminum frame glass door system is available in both single and double-winged configurations.



Ceiling Interiors

Add internal drapes to your event tent for a touch of elegance.



Awnings

These visually striking structural additions provide extra protection from the elements.



Portable Conditioning

The air conditioning compressor and fan unit have been built onto a steel frame that can be easily moved into position on a trolley.



Ground Fixings

The frame must be fixed and secure prior to installing the roof and wall fabric.

Ensure you have the correct ground fixings for your application.

Grass: Steel Stakes

Fix each Base Plate with Steel Stakes. Ensure stakes are appropriately secured into the soft surface (Grass/Dirt).

Concrete: Dynabolt

Fix each Base Plate with Dynabolts.

Weight Plate: Ground Mounting (suitable for any surface)
Each Base Plate will need to have at least 440 pounds (200kg).
Refer to engineer certificate for more information.
Concrete block not supplied by Extreme Canopy.



What you will need for installation

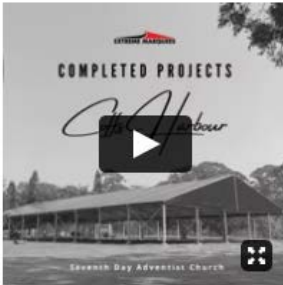
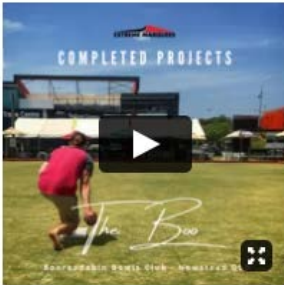
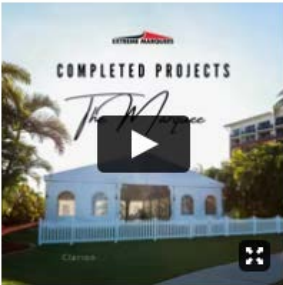
All crest from the Extreme Canopy range are temporary structures, refer to engineer certification for more information about this product.

Drill / Impact Driver x2, Socket Set & Shifter, Ladder x2, Mallet, Tape Measure, Stringline, Level, Marking Pencil, Box Cutter & Forklift / Crane / Scissor Lift *

The use of Scissor Lifts for Crest tent construction may vary depending on size.

Completed Projects

Videos available on Extreme Canopy Vimeo channel



PRODUCT SHOWN
43' Span x 148' Length
EC Series 203
Gray roof with clear walls



P 888- 201-1968 **E** admin@extremecanopy.com

17852 Gothard Street, Huntington Beach,
California 92647, United States America

SHOP ONLINE www.extremecanopy.com

